

# Ethernet Data Logger

Network Connect for Data Logging and PBX Applications



## Features

- Mainstream Ethernet 10BaseT connection
- Flexible RS-232 port with Robust Xon/Xoff
- Transient Protection provided on RS-232 Port
- Configure Software or Hardware Handshaking
- Select DTR/DSR or RTS/CTS
- Switch Select RS-232 port as DCE or DTE
- Up to 32Mb of Data Buffer
- LED feedback indicators
- Generates its own output Test Data Stream
- Watchdog Timer Reset Circuit
- Battery powered operation for more than 12 hours
- Intelligent battery charging circuit
- Locking power connector

## Description

The ASeries A1400eL is a fully electronic data storage buffer or data logger. It provides reliable storage of your valuable data, even during a power failure. It has an RS-232 Serial input port and a 10BaseT Ethernet port for connection to a LAN or WAN.

A major feature of this product is its ability to operate without external power for up to 12 hours. This makes it invaluable for a wide variety of Data Logging applications where integrity of data is essential.

Mainstream Ethernet 10BaseT connectivity is provided with extensive applications support to industrial and commercial environments.

A flexible and reliable RS-232 Serial port will cater for the majority of serial connections in all environments.

The data storage buffer can be supplied in sizes ranging from 1Mb, 4Mb, 8Mb, 16Mb up to 32Mb.

These features combined with Alfatron's acknowledged and proven attention to quality manufacture make this the most reliable and affordable Ethernet Data Collection Buffer on the market today.

## ASeries A1400eL



## Reliable Operation

The A1400eL is currently the only data logger in its category to provide full data logging operation without the need for an external power source. Its internal battery allows the unit to perform its normal operations for periods up to 12 hours.

It contains an intelligent battery charging circuit which keeps the internal battery at the perfect float level which guarantees extended battery life.

## Versatile Ethernet Port

The A1400eL provides proven mainstream Ethernet connectivity with rock-solid IP firmware and extensive applications support to industrial and commercial environments.

## Flexible RS-232 Port

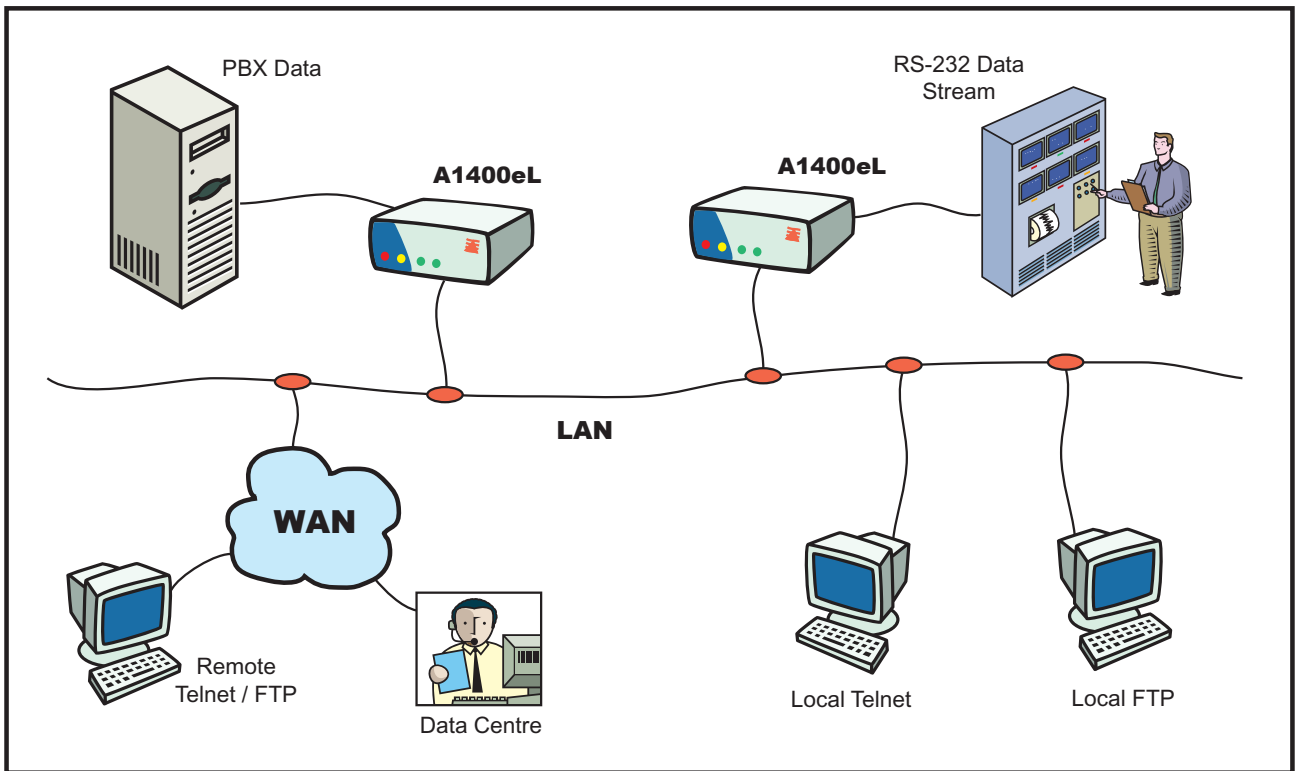
The RS-232 port configuration options include the selection of Software Handshaking using Robust Xon/Xoff or Hardware Handshaking using either the DSR/DTR or RTS/CTS handshake pairs.

This port is switch selectable to either DCE or DTE to simplify cable usage and may be independently configured at speeds ranging from 600 to 115,200bps using 7 or 8 data bits and None, Odd or Even Parity.



Alfatron Pty Ltd ACN 005 410 819  
PO Box 4161  
Unit 9, 36 New St.  
Ringwood VIC 3134 AUSTRALIA  
Tel: +61-3-9876 9011 Fax: +61-3-9876 9044  
Email: sales@alfatron.com.au Web Site: www.alfatron.com.au





### PBX Call Accounting Data

The A1400eL has a proven record in the collection of SMDR/CDR data from a wide variety of PBX Systems.

Reliability in the field has been one of its outstanding traits. Now that our A1400 Series has gone 'Ethernet Connect', reliable operation will become even more important.

Using FTP data transfer the buffered call data records may be retrieved over the network on demand. Simplicity of operation is the key to this successful product.

### Generic Data Collection

While it has exceptional credentials in the PBX data collection area, the A1400eL can easily be used as a general purpose data collection unit.

The flexibility of the Serial and Ethernet ports make the A1400eL suited to a wide variety of applications in both the commercial and industrial areas.

Added to this Alfatron is able to provide specially tailored units with firmware to meet individual customer needs.

## Specifications - A Series A1400eL

#### Ethernet Port

Protocols: ARP, UDP, TCP, Telnet, ICMP, SNMP, DHCP, TFTP and HTTP

Network Interface: RJ45 (10BaseT)

Management: HTTP  
SNMP (read only)  
Serial Login  
Telnet Login

Compatibility: Ethernet: Version 2.0/IEEE 802.3

System Software: Flash ROM standard via TFTP or Serial

#### Activity Indicators

Front Panel LEDs: Power (Yellow)  
Error (Red)  
Serial Data Input (Green)  
Serial Data Output (Green)  
Network Link (Green)  
Network Error (Red)

#### Serial Port

Specification: RS-232 Serial (CCITT V.24)

Physical: DB25 Female Connector  
Switch selectable DTE / DCE  
Jumper select DTR/DSR or CTS/RTS

DIP Switch Select: • 1200, 2400, 4800, 9600, 19,200  
38,400, 56,800 & 115,200bps baud rate  
• 7 or 8 data bits  
• None, Odd or Even Parity  
• Hardware Handshaking  
• Software H'shaking (Robust Xon/Xoff)

#### Other

Power Supply: 16V DC (750mA)

Dimensions: 200mm x 200mm x 50mm

Weight: 1850 grams



N42